

Red Rose Farm

Fabric Collection by Elizabeth Scott



ROFA 557 B



ROFA 557 E



ROFA 557 Y



ROFA 558 B



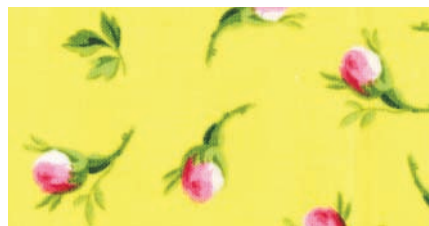
ROFA 558 E



ROFA 558 P



ROFA 560 E



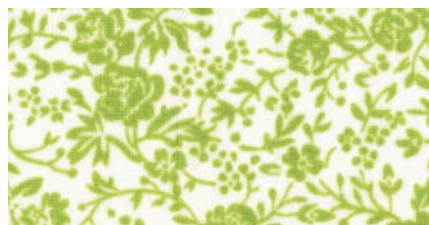
ROFA 560 Y



ROFA 563 P



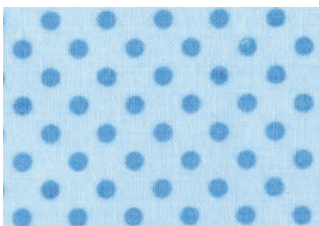
ROFA 561 B



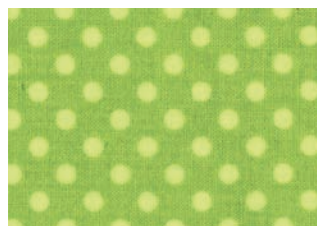
ROFA 561 G



ROFA 561 P



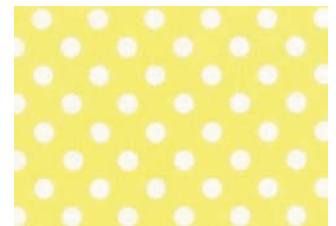
ROFA 562 B



ROFA 562 G



ROFA 562 P



ROFA 562 Y

P&B Textiles ♦ 1580 Gilbreth Road, Burlingame, CA 94010 ♦ 800-852-2327

For wholesale orders: 1331 Regal Row, Suite A, Dallas, TX 75247 ♦ 800-351-9087 ♦ www.pbtext.com



100% cotton ♦ Cold wash & dry ♦ 43"/44" ♦ Colors may vary due to printing process ♦ 10/10

All fabrics shown at 80% scale except 557 and 558 which are shown at 40% scale.

Red Rose Farm

Fabric Collection by **Elizabeth Scott**

FREE PATTERN
Ask for our fabrics
in your local
independent
quilt shop!



Red Rose Star quilts by Elizabeth Scott

Throw Size: 62" x 80"

Wall Hanging: 50" square



pbtex.com

Red Rose Star



Quilt by Elizabeth Scott using her *Red Rose Farm* fabric collection for P&B Textiles
Wall Hanging: 50" square • Throw: 62" x 80"

Yardage

WALL HANGING

ROFA 557 B	1/2 yard
ROFA 558 B	1 yard
ROFA 560 E	5/8 yard
ROFA 561 B	1/4 yard
ROFA 562 G	1/4 yard
ROFA 562 P	5/8 yard
ROFA 562 Y	1/4 yard
ROFA 563 P	2/3 yard
Backing:	3 1/2 yards of any <i>Red Rose Farm</i> fabric

Cutting

WALL HANGING

Review all instructions before beginning your project.
All strips are cut across the width of fabric (wof).

From ROFA 557 B (large roses), cut:

- (5) 6 1/2" squares centering a rose motif in the middle of each square
- (4) 3 1/2" x 6 1/2" rectangles
- (4) 3 1/2" squares

From ROFA 560 E (cream rosebuds), cut:

- (4) 4" x wof strips; crosscut into (32) 4" squares.
Cut each square in half diagonally to make (64) half-square triangles.

From ROFA 562 P (pink dots), cut:

- (4) 4" x wof strips; crosscut into (32) 4" squares.
Cut each square in half diagonally to make (64) half-square triangles.

From ROFA 561 B (blue floral), cut:

- (2) 3 1/2" x wof strips; crosscut into (16) 3 1/2" squares

From ROFA 562 Y (yellow dots), cut:

- (2) 3 1/2" x wof strips; crosscut into (16) 3 1/2" squares

From ROFA 563 P (rose stripe), cut:

- (2) 3 1/2" x wof strips; (16) 3 1/2" squares
- (6) 2 1/4" x wof binding strips

From ROFA 562 G (green dots), cut:

- (4) 1 1/2" x wof inner-border strips

From ROFA 558 B (rose bouquet), cut:

- (5) 6 1/2" x wof outer-border strips

Assembly

WALL HANGING

1. Join a pink dot triangle and a cream rosebud triangle along their long edges to make a half-square-triangle unit. Press the seam allowances toward the pink triangle. Make a total of 64 half-square-triangle units. Trim each unit to measure 3 1/2" x 3 1/2".
2. Using two half-square-triangle units, join the units in pairs, sewing along the pink triangles to create a larger triangle unit as shown in figure 1. Press the seam allowances open. Make a total of 24 flying-geese units. (Set aside the remaining half-square-triangle units for the quilt assembly.)
3. Stitch a unit from step 2 to opposite sides of a rose 6 1/2" square. Press the seam allowances toward the center square. Make a total of 5 units. (Set aside the remaining flying-geese units for the quilt assembly.)
4. Stitch a blue floral square to a yellow dot square as shown in figure 2. Press the seam allowances toward the blue square. Make a total of 16 units.
5. Using 8 units from step 4, join the units in pairs to make four-patch units. Make 4 units. Press the seam allowances in one direction. (Set aside the remaining units for the quilt assembly.)
6. Lay out the rose 3 1/2" squares, rose rectangles, rose stripe squares, half-square-triangle units, and the units from steps 3 and 5 in nine rows as shown in the quilt assembly diagram. Join the pieces in each row and press the seam allowances toward the squares. Join the rows, pressing the seam allowances in one direction.
7. Measure the quilt top through the center from top to bottom. Trim two green strips to that length and stitch them the sides of the quilt top. Press the seam allowances toward the inner border. Measure the quilt top through the center from side to side. Trim the remaining two green strips to that length and sew them to the top and bottom of the quilt top. Press.
8. Join the 6 1/2"-wide outer-border strips end to end to make a long strip. Repeat step 7 to measure, cut and sew the outer-border strips to the sides and then the top and bottom of the quilt top. Press all seam allowances toward the outer border.
9. Layer the quilt top with batting and backing; baste. Quilt as desired. Using the striped 2 1/4"-wide strips, bind the edges to finish.

Yardage

THROW QUILT

ROFA 557 B	1 yard
ROFA 558 B	1 5/8 yards
ROFA 560 E	1 1/8 yards
ROFA 561 B	1/2 yard
ROFA 562 G	1/3 yard
ROFA 562 P	1 1/8 yards
ROFA 562 Y	1/2 yard
ROFA 563 P	1 1/4 yards
Backing:	4 3/4 yards of any <i>Red Rose Farm</i> fabric

Cutting

THROW QUILT

Review all instructions before beginning your project. All strips are cut across the width of fabric (wof).

From ROFA 557 B (large roses), cut:

- (18) 6 1/2" squares centering a rose motif in the middle of each square

From ROFA 560 E (cream rosebuds), cut:

- (9) 4" x wof strips; crosscut into (82) 4" squares. Cut each square in half diagonally to make (164) half-square triangles.

From ROFA 562 P (pink dots), cut:

- (9) 4" x wof strips; crosscut into (82) 4" squares. Cut each square in half diagonally to make (164) half-square triangles.

From ROFA 561 B (blue floral), cut:

- (4) 3 1/2" x wof strips; crosscut into (34) 3 1/2" squares

From ROFA 562 Y (yellow dots), cut:

- (4) 3 1/2" x wof strips; crosscut into (34) 3 1/2" squares

From ROFA 563 P (rose stripe), cut:

- (48) 3 1/2" squares, center the stripe diagonally across each square (Note: the cut edges of the squares will be on the bias.)
- (8) 2 1/4" x wof binding strips

From ROFA 562 G (green dots), cut:

- (6) 1 1/2" x wof inner-border strips

From ROFA 558 B (rose bouquet), cut:

- (8) 6 1/2" x wof outer-border strips

Assembly

THROW QUILT

1. Follow the instructions in step 1 of the wall hanging assembly. Make a total of 164 half-square-triangle units. Trim each unit to measure 3 1/2" x 3 1/2".

2. Follow the instructions in step 2 of the wall hanging assembly. Make a total of 72 flying-geese units.

3. Follow the instructions in step 3 of the wall hanging assembly. Make a total of 18 units. (Set aside the remaining flying-geese units for the quilt assembly.)

4. Follow the instructions in step 4 of the wall hanging assembly. Repeat to make a total of 34 units.

5. Join the units from step 4 in pairs to make four-patch units. Make 17 units. Press the seam allowances in one direction.

6. Lay out the rose stripe squares, four-patch units, the remaining flying-geese units, and the units from step 3 in fifteen rows as shown in the photo. Join the pieces in each row and press the seam allowances toward the squares. Join the rows, pressing the seam allowances in one direction. (See diagram.)

7. Join the green inner-border strips end to end to make a long strip. Measure the quilt top through the center from top to bottom. Cut two green strips to that length and stitch them the sides of the quilt top. Press the seam allowances toward the inner border. Measure the quilt top through the center from side to side. Cut two green strips to that length and sew them to the top and bottom of the quilt top. Press.

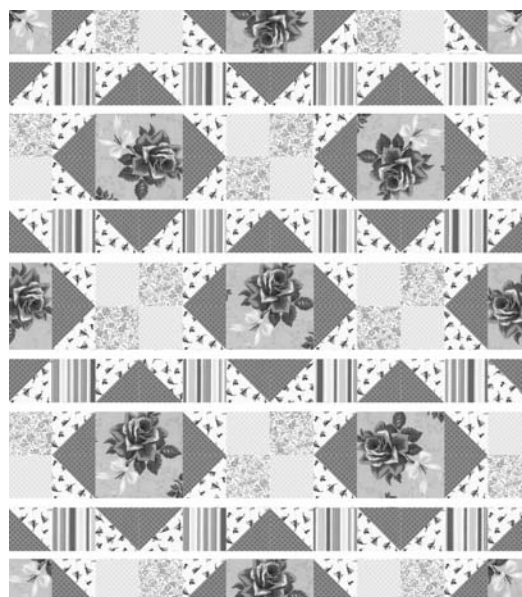
Finish your quilt according to steps 8 and 9 in the wall hanging assembly instructions.



FIGURE 1



FIGURE 2



QUILT ASSEMBLY DIAGRAM