

Millefleur

Fabric Collection by P&B Textiles



MILL 965 C



MILL 965 K



MILL 965 Z



MILL 966 C



MILL 966 K



MILL 966 Z



MILL 967 G



MILL 967 P



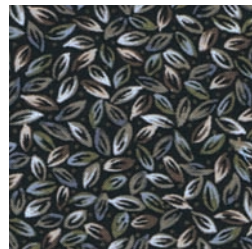
MILL 967 Y



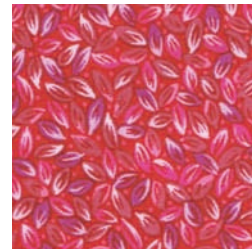
MILL 968 C



MILL 968 G



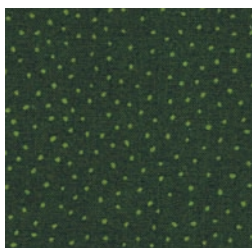
MILL 968 K



MILL 968 R



MILL 968 Z



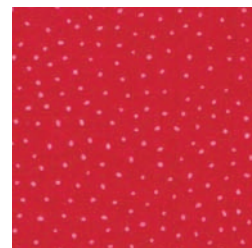
MILL 969 G



MILL 969 NE



MILL 969 P



MILL 969 R



MILL 969 X

P&B Textiles ♦ 1580 Gilbreth Road, Burlingame, CA 94010 ♦ 800-852-2327

For wholesale orders: 1331 Regal Row, Suite A, Dallas, TX 75247 ♦ 800-351-9087 ♦ www.pbtex.com



100% cotton ♦ Cold wash & dry ♦ 43"/44" ♦ Colors may vary due to printing process ♦ 11/07

All fabrics shown at 60% scale.

Millefleur

Fabric Collection by
P&B Textiles

FREE PATTERN
Ask for our fabrics
in your local
independent
quilt shop!



Dresden Blocks



Tulip Blocks

P&B
TEXTILES

pbtex.com

Jardin des Fleurs quilts by Cyndi Hershey
Quilt Size: 52" square ♦ Finished Block: 8" square

Jardin Des Fleurs

Quilts designed by Cyndi Hershey using the *Millefleur* fabric collection by P&B Textiles

Finished quilt: 52" square • Finished block: 8" square

NOTE: This pattern uses chain blocks combined with either machine appliquéd Dresden Flower blocks or pieced Tulip blocks. Follow the instructions for your choice of flower block.

Yardage Requirements

Either Quilt

MILL 965K	Large Black Floral	1 5/8 yard
MILL 966K	Small Black Floral	1 1/4 yards <i>(this amount is sufficient to cut the Dresden Flower centers, if using)</i>
MILL 969X	Gold Dot	5/8 yard
MILL 968R	Dark Pink Leaf	3/8 yard
BACKING	any <i>Millefleur</i> fabric	3 1/2 yards

Dresden Blocks

MILL 969P	Light Pink Dot	5/8 yard
MILL 969R	Dark Pink Dot	5/8 yard
MILL 968G	Green Leaf	1 yard

Tulip Blocks

MILL 969P	Light Pink Dot	5/8 yard
MILL 969R	Dark Pink Dot	1/8 yard
MILL 968G	Green Leaf	5/8 yard

Cutting

OUTER BORDERS AND BINDING: From the length of the fabric (parallel to the selvages), cut (2) strips 5 1/2" x 42 1/2" and (2) strips 5 1/2" x 52 1/2". Use remaining width of fabric for binding.

BACKGROUND OF CHAIN BLOCKS: Cut (9) 1 1/2" strips. Cut (4) of these strips into (64) 1 1/2" x 2 1/2" rectangles. Cut (3) 2 1/2" strips. • Cut (4) 3 1/2" strips. Cut (2) of these strips into (32) 2 1/2" x 3 1/2" rectangles.

CHAIN SQUARES: Cut (8) 1 1/2" strips and (1) 2 1/2" strip.

INNER BORDER: Cut (4 or 5) 1 1/2" strips. Number will depend of the width of your fabric. You will need a total of 166" when strips are pieced together for length.

Dresden Flower Block

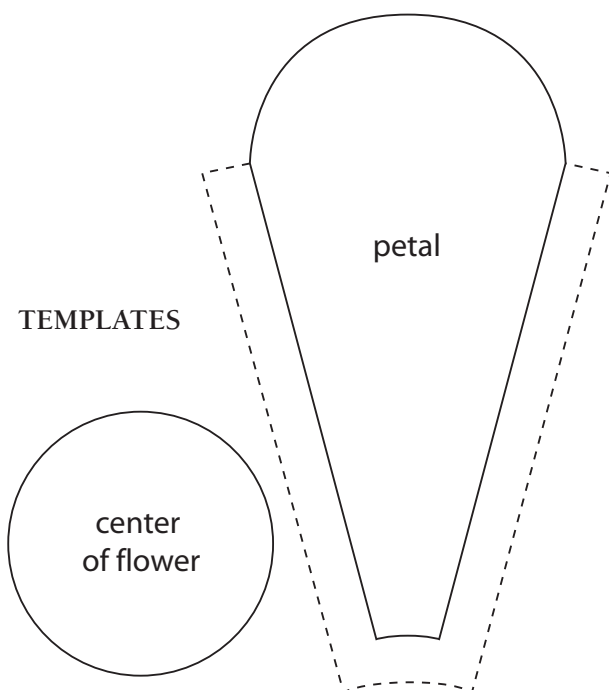
1. Use template to trace and cut (54) each light **and** dark pink petals. You don't need a seam allowance on the curve unless you hand appliquéd.
2. Use template to trace and cut (9) center circles.
3. Cut (9) 10" squares of green background fabric. These will be trimmed down to 8 1/2" after machine appliquéd is completed.

Tulip Block

TULIP PETALS: Cut (1) 4 7/8" strip of the light pink dot fabric; subcut into (5) 4 7/8" squares. Cut each square diagonally in half to yield 10 half-square triangles. You will only use (9) of these triangles. • Cut (3) 4 1/2" strips; subcut into (9) 4 1/2" x 8 1/2" rectangles.

TULIP CENTER: Cut (1) 2 1/2" strip of the dark pink dot fabric; subcut into (9) 2 1/2" squares.

BACKGROUND: Cut (1) 4 7/8" strip of the green leaf fabric; subcut into (5) 4 7/8" squares. Cut each square diagonally in half to yield 10 half-square triangles. You will only use (9) triangles. • Cut (2) 4 1/2" strips of the green leaf fabric; subcut one strip into (9) 2 1/2" x 4 1/2" rectangles. • Cut the remaining strip into (9) 4 1/2" squares. • Cut (1) 2 1/2" strip of the green leaf fabric; subcut into (9) 2 1/2" squares.



Construction

Chain Blocks

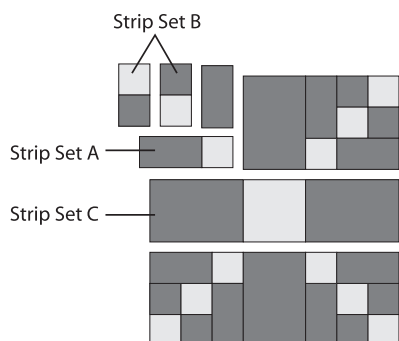
1. For Strip Set A, sew together a small black floral 2 1/2" strip with a gold dot 1 1/2" strip. Press seam toward the black floral. Repeat to make (3) strip sets. Cut into a total of (64) 1 1/2" segments.

2. For Strip Set B, sew together a small black floral 1 1/2" strip with a gold dot 1 1/2" strip. Press seam toward the black floral. Repeat to make (5) strip sets. Cut into a total of (128) 1 1/2" segments. Sew (2) segments together to create a four-patch unit. Press. Repeat to make a total of (64) four-patch units.

3. For Strip Set C, sew a small black floral 3 1/2" strip to each side of a gold dot 2 1/2" strip. Press seams toward the black floral strips. Cut into a total of (16) 2 1/2" segments.

4. Referring to illustration and photo, sew together (1) Strip Set A segment, (1) Strip Set B four-patch unit and (1) 1 1/2" x 2 1/2" small black floral rectangle. Press. Make a total of (64) units.

5. To complete a chain block, combine (4) units from step 4 with (1) Strip Set C segment and (2) 2 1/2" x 3 1/2" small black floral rectangles. Press. Repeat to make (16) chain blocks.



Dresden Flower Blocks

1. Referring to illustration/photo, sew together flower petals, alternating the light and dark pink petals. When seams have been sewn, they should stop evenly at the raw outer edge of the petals. Press seams open.

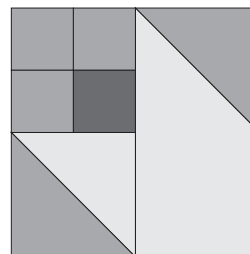
2. Lightly fold background square into quarters to provide alignment guides. Open folds. Align seams of flower unit with folded lines and pin in place. If you prefer, you can use light dots of appliqué glue instead. Place stabilizer of your choice underneath the background square and machine appliqué outer edges of flower using small, narrow stitch. You can use either zigzag or blanket stitch.

3. Pin center circle in place and machine appliqué in place.

4. Press block and trim to 8 1/2" square, keeping Dresden Flower centered within square.

Tulip Block

1. Fold each green leaf 4 1/2" square diagonally in half to crease and open. Refer to illustration/photo for placement and with right sides together, place a green leaf 4 1/2" square at one end of a light pink 4 1/2" x 8 1/2" rectangle. Sew on the diagonal fold line and trim seam to 1/4". Press seam toward the green triangle. Repeat to make (9) units.



2. Sew a green leaf 4 7/8" triangle with a light pink dot 4 7/8" triangle and press seam toward the green triangle. Repeat to make (9) units.

3. Sew a green leaf 2 1/2" square to a dark pink dot 2 1/2" square and press seam toward the green triangle. Repeat to make (9) units.

4. Referring to illustration/photo, sew one unit from each of steps 1-3 with (1) green leaf 2 1/2" x 4 1/2" rectangle. Press. Repeat to make (9) blocks.

Final Construction

1. Refer to illustration/photo to place the chain blocks with either the Dresden Flower or Tulip blocks. Sew into rows and join rows together.

2. Sew the dark pink leaf 1 1/2" strips end to end and press seams open. From this pieced strip, cut (2) 1 1/2" x 40 1/2" strips and (2) 1 1/2" x 42 1/2" strips. Sew the shorter strips to the sides of the quilts and the longer strips to the top and bottom of the quilt. Press all seams toward the borders.

3. Sew a 42 1/2" outer border strip to the sides of the quilt and a 52 1/2" outer border strip to the top and bottom of the quilt. Press all seams toward the borders.

4. Layer, baste and quilt as desired. Prepare and sew binding to the quilt using the remainder of the outer border fabric. Don't forget your label!