

Fraktur Fancy

From the Schwenkfelder
Library & Heritage Center

FREE PATTERNS

Ask for our fabrics
in your local
independent
quilt shop!



Small Quilt: 55 1/2" x 64 1/2"

Fraktur Tiles quilts
by Cyndi Hershey



Large Quilt: 83 1/2" x 92 1/2"

P&B
TEXTILES

pbtex.com

Fraktur Tiles

by Cyndi Hershey using *Fraktur Fancy* fabric collection by P&B Textiles

Small quilt -

Finished quilt: 55 1/2" x 64 1/2"

Finished border block: 9"

Yardage

2 1/8 yards of FRAK 510 E (Ecru border stripe) for outer border
7/8 yard of FRAK 513 I (Red check) for 3rd border and binding
7/8 yard of FRAK 514 I (Red tonal scroll) for border blocks and 1st border
5/8 yard of FRAK 509 E (Ecru bird print) for quilt center
3/4 yard of FRAK 512 E (Ecru heart print) for border blocks
3/8 yard of FRAK 511 K (Black tulip print) for border blocks
3/8 yard of FRAK 514 K (Black tonal scroll) for border blocks
1/4 yard of FRAK 513 K (Multi-color check) for 2nd border
3 1/2 yards of any *Fraktur Fancy* fabric for backing (2 widths pieced horizontally)

Cutting

From the ecru bird print, cut:

1 rectangle, 12 1/2" x 18 1/2"

From the red tonal scroll, cut:

4 strips, 5 3/8" x 42"; crosscut into 28 squares, 5 3/8" x 5 3/8"

2 strips, 2 1/2" x 15 1/2"

2 strips, 2" x 18 1/2"

From the multi-color check, cut:

2 strips, 3" x 18 1/2"

2 strips, 2" x 22 1/2"

From the ecru heart print, cut:

4 strips, 5 3/8" x 42"; crosscut into 28 squares, 5 3/8" x 5 3/8"

From the black tulip print, cut:

4 strips, 2 3/4" x 42"; crosscut into 56 squares, 2 3/4" x 2 3/4"

From the black tonal scroll, cut:

4 strips, 2 3/4" x 42"; crosscut into 56 squares, 2 3/4" x 2 3/4"

From the red check, cut:

5 strips, 2" x 42"

6 binding strips, 2 1/2" x 42"

From the ecru border stripe, cut:

2 strips, 8 1/2" x 68"***

2 strips, 8 1/2" x 59"***

***Cut strips from the lengthwise grain; center the scrolling vine in the middle of each strip.

Construction

1. Sew a 2"-wide red tonal scroll strip to each long side of the 12 1/2" x 18 1/2" ecru bird rectangle. Press toward the red strips. Then sew a 2 1/2"-wide red tonal scroll strip to the top and bottom edges of the rectangle; press.

2. Sew a 2"-wide multi-color check strip to each long side of the center unit. Press toward the border strips. Then sew a 3"-wide multi-color check strip to the top and bottom edges; press.

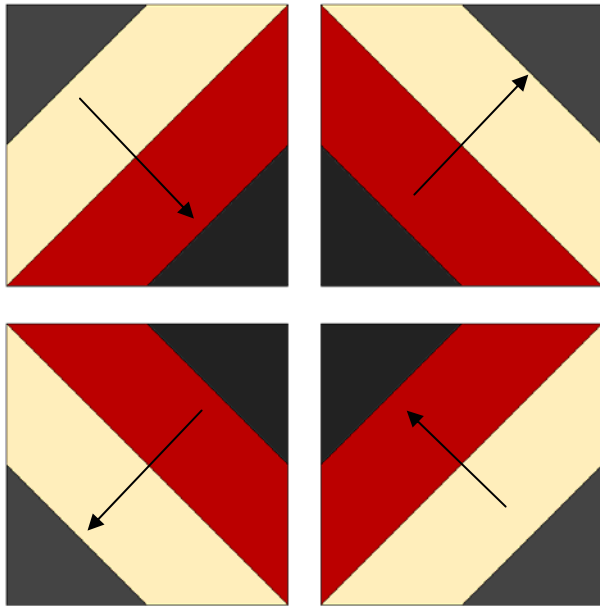
3. Draw a diagonal line from corner to corner on the wrong side of each 5 3/8" ecru heart square. Match each marked square with a red tonal scroll square, right sides together. Sew 1/4" from both sides of the marked line. Cut on the marked line to make 56 half-square triangle units. Press half of the seams toward the red fabric and the other half toward the ecru fabric.

4. Draw a diagonal line from corner to corner on the wrong side of each 2 3/4" black tulip square. Using the half-square triangle units from step 3, place a marked square on top of the red triangle, right sides together and raw edges aligned. Sew along the marked line. Trim the excess fabric leaving a 1/4" seam allowance. Press the seams in the same direction as the center seam.

5. Draw a diagonal line from corner to corner on the wrong side of each 2 3/4" black tonal scroll square. Using the units from step 4, place a marked square on top of the ecru triangle, right sides together and raw edges aligned. Sew along the marked line. Trim the excess fabric leaving a 1/4" seam allowance. Press the seams in the same

direction as the center seam. (All of the seams in each unit should be pressed in the same direction.)

6. Arrange four units as shown with the black tulips in the center and pressed seams opposing each other. Sew the units together and press. Make 14 blocks.



7. Sew three blocks together to make a vertical block row; press. Make two and sew them to the sides of the center unit from step 2. Press the seams toward the multi-color check border.

8. Sew four blocks together to make a horizontal block row; press. Make two and sew them to the top and bottom edges; press.

9. Sew the 2"-wide red check strips together end to end; press. Measure the quilt length through the center, cut two strips to this measurement and sew them to the sides of the quilt top. Press toward the border strips. Measure the quilt width through the center, including the borders just added. Cut two strips to this measurement and sew them to the top and bottom of the quilt top; press.

10. Center and pin the shorter outer-border strips to the top and bottom edges of the quilt top. Sew the strips from seam point to seam point and backstitch at the beginning and end of the seam. Add the longer outer-border strips to the sides of the quilt in the same manner. Press the seams toward the outer-borders. Finish the corners with mitered seams. Press these seams open.

11. Layer the quilt top with batting and backing. Quilt as desired. Bind the edges to finish. Add a label to the back of your quilt and enjoy!

Large quilt -
Finished quilt: 83 1/2" x 92 1/2"
Finished border block: 9"

Yardage

3 yards of FRAK 510 E (Ecru border stripe) for outer border
2 1/8 yards of FRAK 511 K (Black tulip print) for border blocks
1 1/3 yards of FRAK 512 E (Ecru heart print) for border blocks
1 1/4 yards of FRAK 514 KZ (Black/Gold scroll) for border blocks
1 1/8 yards of FRAK 513 I (Red check) for 3rd border and binding
7/8 yard of FRAK 514 I (Red tonal scroll) for border blocks and 1st border
7/8 yard of FRAK 514 K (Black tonal scroll) for border blocks and 4th border
5/8 yard of FRAK 509 E (Ecru bird print) for quilt center
5/8 yard of FRAK 514 H (Dark green tonal scroll) for 5th border
1/4 yard of FRAK 513 K (Multi-color check) for 2nd border
7 7/8 yards of any *Fraktur Fancy* fabric for backing (3 widths pieced horizontally)

Cutting

From the ecru bird print, cut:

1 rectangle, 12 1/2" x 18 1/2"

From the red tonal scroll, cut:

4 strips, 5 3/8" x 42"; crosscut into 28 squares, 5 3/8" x 5 3/8"

2 strips, 2 1/2" x 15 1/2"

2 strips, 2" x 18 1/2"

From the multi-color check, cut:

2 strips, 3" x 18 1/2"

2 strips, 2" x 22 1/2"

From the ecru heart print, cut:

4 strips, 5 3/8" x 42"; crosscut into 28 squares, 5 3/8" x 5 3/8"

8 strips, 2 3/4" x 42"; crosscut into 104 squares, 2 3/4" x 2 3/4"

From the black tulip print, cut:

8 strips, 5 3/8" x 42"; crosscut into 52 squares, 5 3/8" x 5 3/8". Cut each square once diagonally to yield 104 triangles.

5 strips, 3 1/8" x 42"; crosscut into 52 squares, 3 1/8" x 3 1/8"
4 strips, 2 3/4" x 42"; crosscut into 56 squares, 2 3/4" x 2 3/4"

From the black tonal scroll, cut:

5 strips, 3 1/2" x 42"
4 strips, 2 3/4" x 42"; crosscut into 56 squares, 2 3/4" x 2 3/4"

From the red check, cut:

5 strips, 2" x 42"
10 binding strips, 2 1/2" x 42"

From the black/gold scroll, cut:

13 strips, 3 1/8" x 42"; crosscut into 156 squares, 3 1/8" x 3 1/8". Cut 104 of the squares once diagonally to yield 208 triangles.

From the dark green tonal scroll, cut:

7 strips, 2 1/2" x 42"

From the ecru border stripe, cut:

2 strips, 8 1/2" x 96"***
2 strips, 8 1/2" x 87"***

**Cut strips from the lengthwise grain; center the scrolling vine in the middle of each strip.

Construction

1. Follow the small quilt construction steps 1—9 to make the center section of the large quilt.
2. Sew the black tonal strips together end to end; press. Measure the quilt length through the center, cut two strips to this measurement and sew them to the sides of the quilt top. Press toward the border strips. Measure the quilt width through the center, including the borders just added. Cut two strips to this measurement and sew them to the top and bottom of the quilt top; press.
3. Draw a diagonal line from corner to corner on the wrong side of each 2 3/4" ecru heart square. Place a marked square on the corner of each 5 3/8" black tulip triangle, right sides together and raw edges aligned. Sew along the marked line. Trim the excess fabric leaving a 1/4" seam allowance; press.
4. Draw a diagonal line from corner to corner on the wrong side of each 3 1/8" black/gold square. Match each marked square with a black tulip square, right sides

together. Sew 1/4" from both sides of the marked line. Cut on the marked line and press. Make 104 half-square triangle units.

5. Sew a 3 1/8" black/gold triangle to adjacent sides of each half-square triangle unit from step 4 as shown in the diagram after step 6; press

6. Sew one unit from step 3 and one unit from step 5 together as shown; press. Make 104 units.



7. Arrange four units as shown with the ecru heart triangles in the center. Sew the units together and press. Make 26 blocks.



8. Sew six blocks together to make a vertical block row; press. Make two and sew them to the sides of the quilt top. Press the seams toward the black border.

9. Sew seven blocks together to make a horizontal block row; press. Make two and sew them to the top and bottom edges; press

10. Sew the dark green tonal scroll strips together end to end; press. Measure the quilt length through the center, cut two strips to this measurement and sew them to the sides of the quilt top. Press toward the border strips. Measure the quilt width through the center, including the borders just added. Cut two strips to this measurement and sew them to the top and bottom of the quilt top; press.

11. Center and pin the shorter outer-border strips to the top and bottom edges of the quilt top. Sew the strips from seam point to seam point and backstitch at the beginning and end of the seam. Add the longer outer-border strips to the sides of the quilt in the same manner. Press the seams toward the outer-borders. Finish the corners with mitered seams. Press these seams open.

12. Layer the quilt top with batting and backing. Quilt as desired. Bind the edges to finish. Add a label to the back of your quilt and enjoy!

Fraktur Fancy

From the Schwenkfelder Library & Heritage Center

Fabric Collection by P&B Textiles



FRAK 509 B



FRAK 509 E



FRAK 509 G



FRAK 510 B



FRAK 510 E



FRAK 510 G



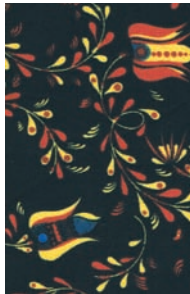
FRAK 511 B



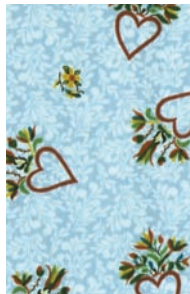
FRAK 511 G



FRAK 511 I



FRAK 511 K



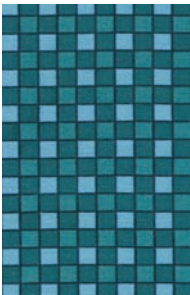
FRAK 512 B



FRAK 512 E



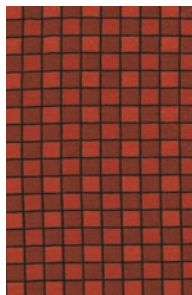
FRAK 512 G



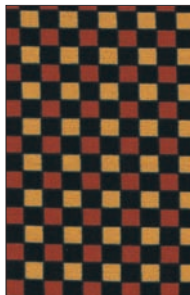
FRAK 513 B



FRAK 513 E



FRAK 513 I



FRAK 513 K



FRAK 514 B



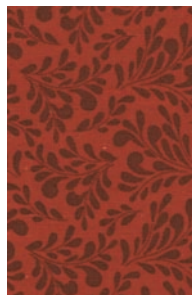
FRAK 514 E



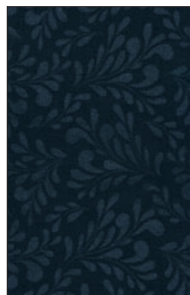
FRAK 514 G



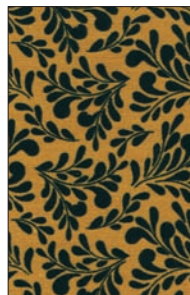
FRAK 514 H



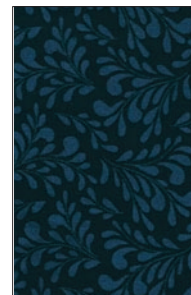
FRAK 514 I



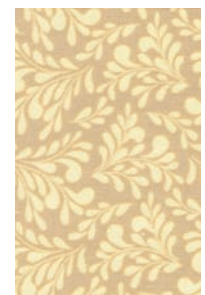
FRAK 514 K



FRAK 514 KZ



FRAK 514 N



FRAK 514 U

P&B Textiles ♦ 1580 Gilbreth Road, Burlingame, CA 94010 ♦ 800-852-2327

For wholesale orders: 1331 Regal Row, Suite A, Dallas, TX 75247 ♦ 800-351-9087 ♦ www.pbtex.com



100% cotton ♦ Cold wash & dry ♦ 43"/44" ♦ Colors may vary due to printing process ♦ 11/07

All fabrics shown at 50% scale except stripe which is at 19%.