

# Nuances

Fabric collection by P&B Textiles



*Vibrations* quilt by Nancy Mahoney • Quilt size: 48" square



[pbtex.com](http://pbtex.com)

# Vibrations

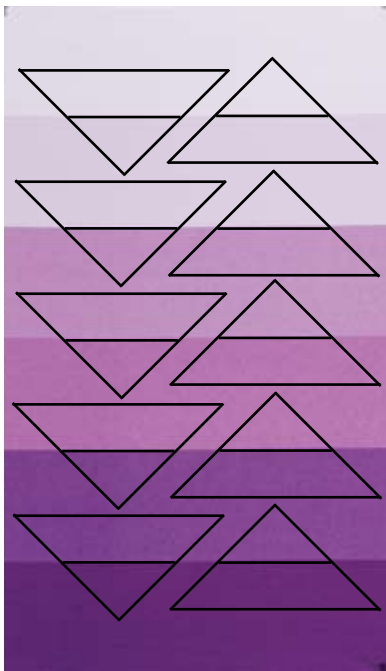
Quilt by Nancy Mahoney; machine quilted by Nan Moore  
Using the Nuances fabric collection by P&B Textiles

Quilt size: 48" square

## Yardages

<b>NUAN 202 C</b>	2 1/2 yards
<b>NUAN 202 Y</b>	2 1/2 yards
<b>CSPE 08 C</b>	1/2 yard (binding)
Backing	3 yards of any Color Spectrum solid

**Other materials:** Omnigridd #98L triangle ruler



Cutting diagram



Detail of block, upper left corner of quilt.

## Cutting

Instructions are for fabric that has NOT been prewashed.  
Do not prewash the fabric!

Starting with one color, lay the pressed fabric flat on your cutting mat, right side facing up. The fabric should not be folded. Cutting will be easier if you use a large cutting mat.

Working across the width of fabric, from selvage to selvage, place the triangle ruler on the first line separating the two shade of color. Using an Omnigridd #98L ruler place line 6 on top of the line on the fabric. Hold the ruler firmly in place and cut around the entire ruler to make a triangle. Half of the triangle will be one shade and the other half will be a lighter (or darker) shade of color. The short sides of the triangle will be on the bias; hand the triangles with care to avoid stretching the bias edge.

Move to the next color line; position the ruler in the same manner and cut another triangle. Continue cutting triangles across the width of fabric; you should have five triangles.

Next, cut five more triangles across the width of fabric, rotating the ruler 180°. The colors in these triangles should be the reverse of the first set of triangles. If the first set has the darker shade on the bottom of the triangle, the second set should have the darker shade at the top of the triangle.

Continue cutting triangles until you have four sets with the darker shade on the bottom of the triangle and four sets with the darker shade at the top of the triangle. Sort the triangles into groups of four matching triangles. You should have ten groups of triangles. (This will make layout of the blocks easier.)

In the same manner, cut ten groups of four matching triangles from the second fabric color.

# Assembling the Quilt

Each block uses two purple triangles and two yellow triangles. Refer to the photo as needed for color placement guidance. On a design wall and starting in the upper left corner with the first block, lay out two of the lightest purple triangles. One triangle will have the lightest shade on the bottom and the other triangle will have the lightest shade at the top. Add two yellow triangles. Lay out the next block, using darker shades of the yellow and purple triangles. Lay out the next two blocks. The third block is a mirror-image of the second block. The fourth block is a mirror-image of the first block.

In the same manner, continue laying out triangles to make a total of four rows with four blocks in each row. The bottom half of the quilt is a mirror-image of the top half. You will have eight purple triangles and eight yellow triangles left over for another project.

Carefully examine the layout to make sure that each piece is positioned correctly, again referring to the photo as needed. Working with one block at a time, sew the two purple triangles together along their short sides to make a large triangle. Sew the two yellow triangles together in the same manner and then sew the purple large triangle to the yellow large triangle. After pressing the seam allowances, return the block to its correct position in the quilt layout on your design wall. Make 16 blocks.

Once again, examine the layout, making sure each block is positioned correctly. Once you are satisfied, sew the blocks together into rows and press. Sew the rows together and press.

Layer the quilt with batting and backing; quilt as desired. Cut five 2 ¼" binding strips, prepare and sew the binding to the quilt. Add a label and enjoy.

---

## Bonus Project: Table Topper



Table topper size: 24" square

### Additional yardages

1/4 yard of CSPE 08 C for binding  
1 yard of backing fabric

## Assembly

Using the leftover purple triangles and yellow triangles, lay out two purple triangles and two yellow triangles.

In the same manner as for the quilt, sew the two purple triangles together along their short sides to make a large triangle. Sew the two yellow triangles together. Then sew the purple large triangle to the yellow large triangle. Make four matching blocks.

Lay out the blocks in two rows of two blocks each, rotating the blocks so that the yellow triangles are in the center.

Sew the blocks together into rows and then sew the rows together.

Layer with batting and backing; quilt as desired. Cut three 2 ¼" binding strips, prepare and sew the binding to the quilt. Add a label and enjoy.

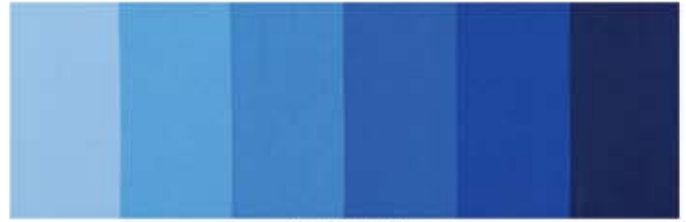
# Nuances

Six color gradations from selvage to selvage

Fabric Collection by **P&B Textiles**



NUAN 202 A



NUAN 202 B



NUAN 202 BG



NUAN 202 C



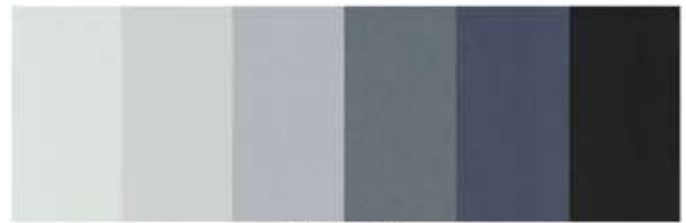
NUAN 202 CG



NUAN 202 FY



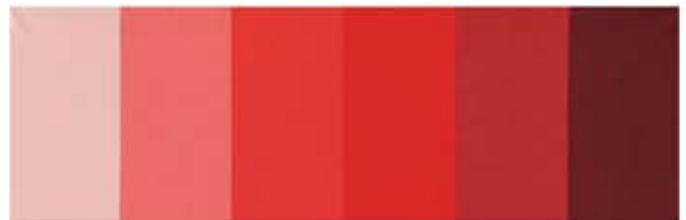
NUAN 202 G



NUAN 202 K



NUAN 202 P



NUAN 202 R



NUAN 202 Y



NUAN 202 Z

**P&B Textiles** ♦ 1580 Gilbreth Road, Burlingame, CA 94010 ♦ 800-852-2327

For wholesale orders: 1331 Regal Row, Suite A, Dallas, TX 75247 ♦ 800-351-9087 ♦ [www.pbtex.com](http://www.pbtex.com)



100% cotton ♦ Cold wash & dry ♦ 43"/44" ♦ Colors may vary due to printing process ♦ 9/09

All fabrics shown selvage to selvage.