

# Gypsy wind

Metallic Accent Collection by **Janet Broxon**

FREE pattern  
available on  
our website,  
[pbtex.com](http://pbtex.com)



*Gypsy Firelight* quilt by Janet Mednick

Quilt Size: 60" square



[pbtex.com](http://pbtex.com)

# Gypsy Firelight

Quilt by Janet Mednick

using the *Gypsy Wind* metallic accent collection by Janet Broxon for P&B Textiles

Size: 60" square

## Yardage

<b>GWIN 855 B</b>	blue gradation	1 yard
<b>GWIN 854 Y</b>	yellow swirls	1/2 yard
<b>GWIN 853 P</b>	pink patchwork	3/8 yard
<b>GWIN 850 P</b>	pink main	7/8 yard
<b>GWIN 851 P</b>	pink paisley	3/4 yard
<b>GWIN 851 B</b>	blue paisley	1/2 yard
<b>GWIN 855 P</b>	pink gradation	3/4 yard
<b>GWIN 852 B</b>	blue stripe	1 yard
<b>BACKING</b>	any GWIN fabric	3 3/4 yards

## Cutting

From blue gradation, cut:

- (24) 4 1/2" squares
- (7) 2 1/4" x 42" binding strips

From yellow swirls, cut:

- (24) 4 1/2" squares

From pink patchwork, cut:

- (14) 4 1/2" squares

From pink main, cut:

- (18) 4 1/2" squares
- (64) 2 1/2" squares

From pink paisley, cut:

- (32) 4 7/8" squares; cut in half diagonally to make (64) triangles

From blue paisley, cut:

- (64) 2 7/8" squares; cut in half diagonally to make (128) triangles

From pink gradation, cut:

- (6) 2 1/2" x 42" inner-border strips
- (4) 4 1/2" corner squares

From blue stripe, cut:

- (6) 4 1/2" x 42" outer-border strips

## Assembly

1. Sew 2 7/8" blue paisley triangles to adjacent sides of a 2 1/2" pink main square to make a triangle unit. Make 64 units.



2. Sew a 4 7/8" pink paisley triangle to each unit from step 1 and press the seam allowances toward the pink triangle. Make 64 units.



## TO MAKE BLOCK A



3. Lay out three blue gradation squares, two pink main squares, and four units from step 2 in a nine-patch arrangement. Refer to the photo for placement guidance as needed. Note that the blue gradation squares are arranged so that the color gradation runs diagonally from dark to light. Join the pieces into rows and then join the rows to complete the block. The block should measure 12 1/2" square. Make a total of eight of A blocks.

## TO MAKE BLOCK B

---



4. Lay out three yellow swirl squares, two pink patchwork squares, and four units from step 2 in a nine-patch arrangement as shown in the illustration. Join the pieces into rows and then join the rows to complete the block. Make a total of six B blocks.

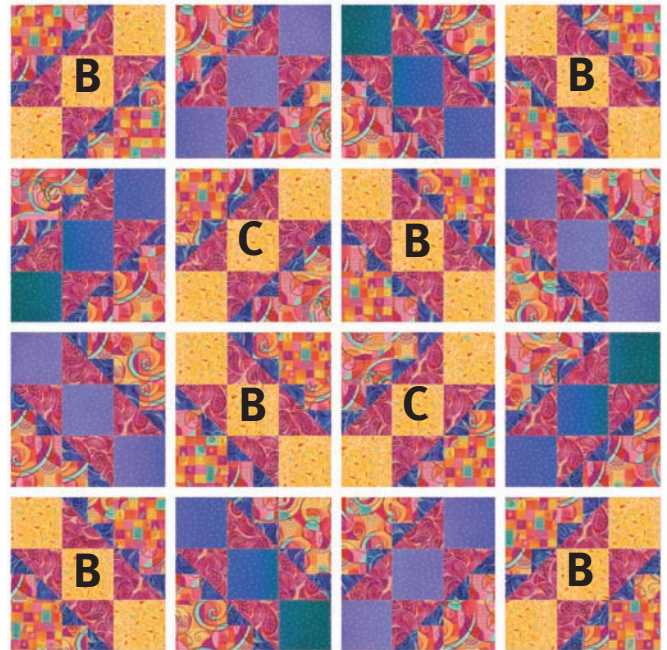
## TO MAKE BLOCK C

---



5. Lay out three yellow swirl squares, one pink patchwork square, one pink main square, and four units from step 2 in a nine-patch arrangement as shown in the photo. (These blocks will be in the center of the quilt top. See diagram.) Join the pieces into rows and then join the rows to complete the block. Make a total of two C blocks.

6. Referring to the photo for placement guidance, lay out the blocks in four rows of four blocks each, rotating the blocks so the blue squares form a large diamond. Join the blocks into rows and then join the rows to complete the quilt center. The quilt center should measure 48 1/2" square.



7. Using two of the pink gradation strips, add a few inches to each end of each remaining pink gradation strip to maintain the centered gradation of color in each strip. Make two 48 1/2"-long side border strips and two 52 1/2"-long top/bottom border strips. Sew the strips to the sides, top, and bottom of the quilt top for the inner border.

8. Join the blue stripe strips end to end to make one long strip. From the strip, cut four 52 1/2"-long strips. Sew two strips to opposite sides of the quilt top. Sew a pink gradation square to the ends of the two remaining strips. Sew these strips to the top and bottom of the quilt top to complete the outer border.

9. Layer the quilt top with batting and backing; baste. Quilt as desired. Using the 2 1/4"-wide blue gradation strips, bind the edges to finish.

# Gypsy Wind

Metallic Accent Collection by Janet Broxon

All swatches shown at 50% scale except main print 850 which is 30% and 855 which is shown selvage to selvage.



GWIN 850 B



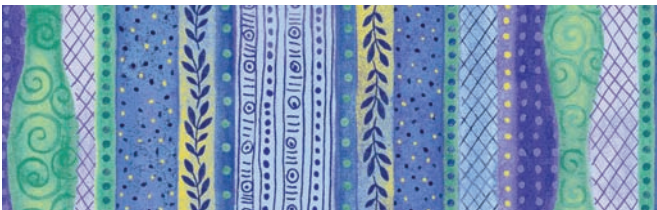
GWIN 850 P



GWIN 851 B



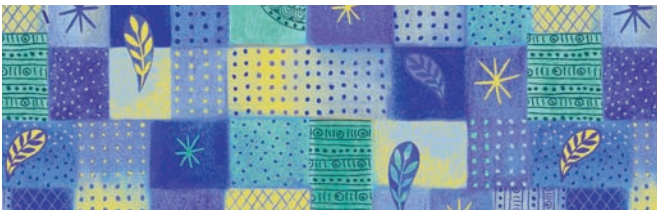
GWIN 851 P



GWIN 852 B



GWIN 852 P



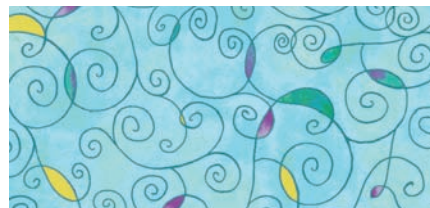
GWIN 853 B



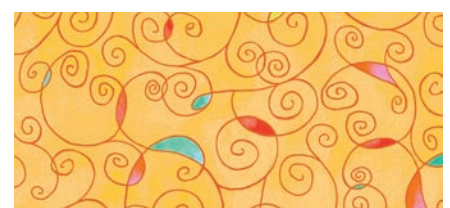
GWIN 853 P



GWIN 854 C



GWIN 854 T



GWIN 854 Y



GWIN 855 B SHOWN SELVAGE TO SELVAGE



GWIN 855 P SHOWN SELVAGE TO SELVAGE

**P&B Textiles** ♦ 1580 Gilbreth Road, Burlingame, CA 94010 ♦ 800-852-2327  
 For wholesale orders: 14683 Midway Road, Addison, TX 75001 ♦ 800-351-9087 ♦ [www.pbtex.com](http://www.pbtex.com)

 100% cotton ♦ Cold wash & dry ♦ 43"/44" ♦ Colors may vary due to printing process ♦ 12/11