

Alexandra

by Alex
Anderson



FREE PATTERN
Ask for our fabrics
in your local
independent
quilt shop!



Sawtooth Fancy Quilt
By Alex Anderson
Quilted by Paula Reid

Quilt Size: 45" x 51" • Finished Block: 6"



pbtex.com

Sawtooth Fancy

Designed by Alex Anderson using her *Alexandra* collection and the *Alison* collection by P&B Textiles
Quilted by Paula Reid

Finished Quilt: 45" x 51" • Finished Block: 6"

This quilt was inspired by the Sawtooth Quilt block. This pattern was extremely popular in the mid-1800's, making it a perfect choice for the Alexandra collection.

Yardage

Fat Quarter measures 18" x 21"

Blocks and Border:

1 fat quarter *each* of 34 prints -

Red - ALEX 163R, 164R, 165R, 166R,
167R, 168R, ALIS 007R

Blue - ALEX 163B, 164B, 165B, 166B,
167B, 168B, ALIS 007B

Gold - ALEX 163X, 164X, 165X, 166X,
167X, 168X, ALIS 007X

Brown - ALEX 163Z, 164Z, 165Z, 166Z,
167Z, 168Z, ALIS 007Z & 007NE

Cream - ALEX 163E, 164E, 167E,
168E, ALIS 007E

Blocks:

1 $\frac{3}{4}$ yards of CSPE 01N (cream solid)

Binding:

$\frac{1}{2}$ yard of ALEX 165B

Backing:

3 yards of any *Alexandra* fabric
(one vertical seam)

NOTE:

All fabric is cut across the width of fabric.

Cutting

From each of the 29 red, blue, gold and brown prints, cut:

- (1) 5 $\frac{3}{8}$ " square (you'll have 1 extra)
- (9) 2 $\frac{3}{8}$ " squares (you'll have 3 extra total)

From the cream solid, cut:

- (4) 5 $\frac{3}{8}$ " strips; crosscut into (28) 5 $\frac{3}{8}$ " squares
- (14) 2 $\frac{3}{8}$ " strips, crosscut into (224) 2 $\frac{3}{8}$ " squares

From each of the 5 cream prints, cut:

- (7) 2 $\frac{3}{8}$ " squares (you'll have 1 extra)

For the binding, cut:

- (6) 2 $\frac{1}{2}$ " strips

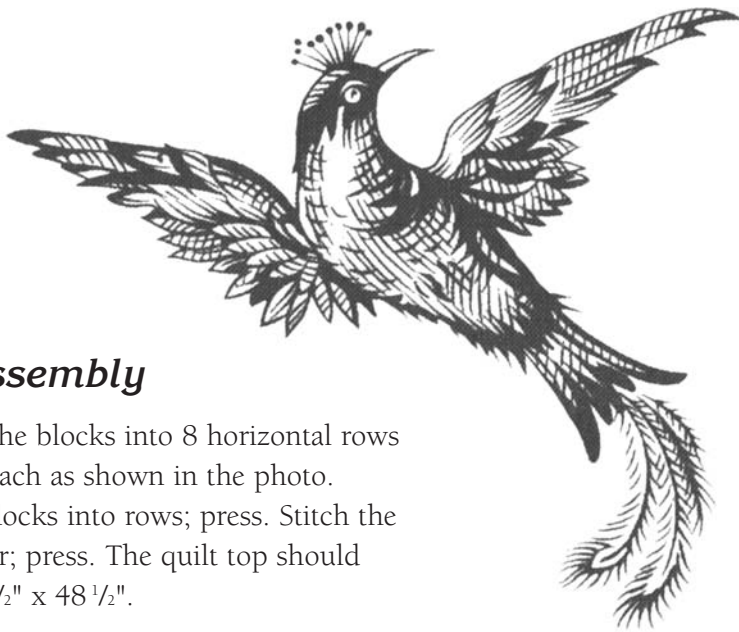
Construction

Blocks:

1. Draw a diagonal line from corner to corner on the wrong side of each 5 $\frac{3}{8}$ " cream square. Place a marked square on each red, blue, gold, or brown 5 $\frac{3}{8}$ " square with right sides together and raw edges aligned. Stitch $\frac{1}{4}$ " from both sides of the marked line. Cut on the marked line and press toward the dark triangle. Make 56 large half-square triangle units.

2. Draw a diagonal line from corner to corner on the wrong side of each 2 $\frac{3}{8}$ " cream solid square. Place a marked square on a red, blue, gold, or brown 2 $\frac{3}{8}$ " square with right sides together and raw edges aligned. Stitch $\frac{1}{4}$ " from both sides of the marked line. Cut on the marked line and press toward the dark triangle. Make 448 small half-square triangle units. You'll have 56 units left over to use in the border strips.

3. To make one block, arrange and sew one unit from step 1 and seven matching same-color units from step 2 together as shown. Repeat to make 56 blocks.



Quilt Assembly

1. Arrange the blocks into 8 horizontal rows of 7 blocks each as shown in the photo.
2. Sew the blocks into rows; press. Stitch the rows together; press. The quilt top should measure 42 1/2" x 48 1/2".

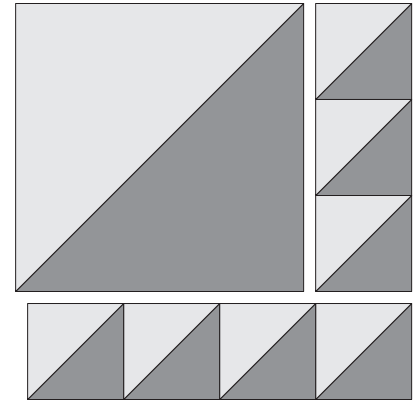
Borders:

1. Draw a diagonal line from corner to corner on the wrong side of each 2 3/8" cream print square. Place a marked square on a red, blue, gold, or brown 2 3/8" square with right sides together and raw edges aligned. Stitch 1/4" from both sides of the marked line. Cut on the marked line and press toward the dark triangle. Make 68 small half-square triangle units.

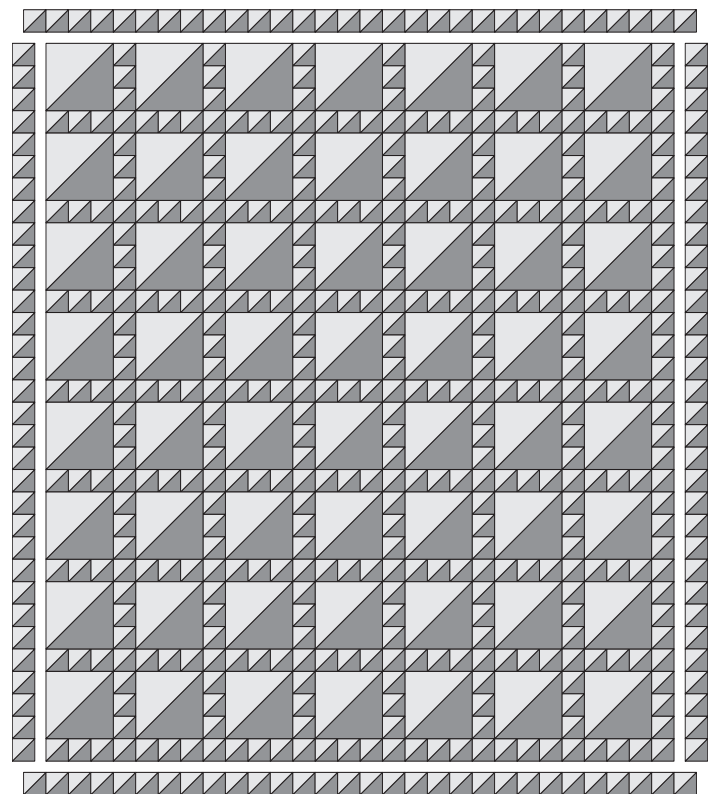
2. Using the small half-square units from step 1 and the 56 units from step 2 of "Blocks", arrange and sew 32 units together as shown in the photo and assembly diagram to make a border strip. Make two. Sew a border strip to each of the long edges of the quilt top.

3. Arrange and sew the remaining small half-square triangles together to make two border strips with 30 units in each strip. Sew a border strip to each of the two remaining short edges.

4. Layer the quilt top with batting and backing. Quilt as desired. Bind the edges to finish. Add a label to the back of your quilt and enjoy!



Block Construction



Quilt Construction