

Adeline

Fabric Collection and Quilts by Nancy Mahoney

FREE PATTERN
Ask for our fabrics
in your local
independent
quilt shop!



Posies for Adeline

Size: 52" square



Hugs & Kisses ~ Size: 52" square



pbtex.com

Posies for Adeline

by Nancy Mahoney using her *Adeline* fabric collection for P&B Textiles

Size: 52" square

CODE	YARDAGE	CUTTING
ADEL 771 B	1 yard	(6) 4 1/2" x 42" border strips (6) 2 1/2" squares
ADEL 771 P	1/8 yard	(6) 2 1/2" squares
ADEL 772 B	1/8 yard	(6) 2 1/2" squares
ADEL 772 G	1/8 yard	(6) 2 1/2" squares
ADEL 772 Y	1/8 yard	(7) 2 1/2" squares
ADEL 773 B	1/8 yard	(6) 2 1/2" squares
ADEL 773 C	1/8 yard	(7) 2 1/2" squares
ADEL 773 P	1/8 yard	(6) 2 1/2" squares
ADEL 774 G	1/8 yard	(6) 2 1/2" squares
ADEL 774 Z	1/8 yard	(6) 2 1/2" squares
ADEL 775 B	1/8 yard	(6) 2 1/2" squares
ADEL 775 R	1/8 yard	(7) 2 1/2" squares
ADEL 775 Z	1/2 yard	(6) 2 1/4" x 42" binding strips
ADEL 776 B	1/8 yard	(6) 2 1/2" squares
ADEL 776 P	1/8 yard	(7) 2 1/2" squares
ADEL 777 C	3/8 yard	(6) 2 1/2" squares (24) flower appliqué*
ADEL 777 P	3/8 yard	(6) 2 1/2" squares (24) flower appliqué*
ADEL 777 Y	3/8 yard	(6) 2 1/2" squares (48) flower center appliqué*
ADEL 778 B	1/8 yard	(6) 2 1/2" squares
ADEL 778 G	3/8 yard	(6) 2 1/2" squares (72) leaf appliqué*
ADEL 778 R	1/8 yard	(6) 2 1/2" squares
CSNE AW	1 5/8 yards	(4) 6 1/2" x 42" strips, cut into (24) 6 1/2" squares (7) 2 1/2" x 42" strips; cut into (100) 2 1/2" squares (5) 1 1/2" x 42" border strips
BACKING	3 1/4 yards of any <i>Adeline</i> fabric	
FUSIBLE WEB	1 yard: 16"-wide	

ASSEMBLY

1. Lay out five different assorted print squares and four cream squares in a nine-patch arrangement. Join the squares in rows. Join the rows to complete the block. Make a total of 25 Nine Patch blocks.

2. Following the manufacturer's instructions and using the patterns, trace the listed number of each shape onto the paper side of fusible web. (Group the shapes together on the fusible web so that you can fuse them as a single unit to the wrong side of the appropriate fabric.) Roughly cut out the single unit, leaving about 1/4" margin all around the drawn lines. Fuse the traced shapes to the wrong side of the appropriate fabric and cut out the shapes, cutting directly on the line.

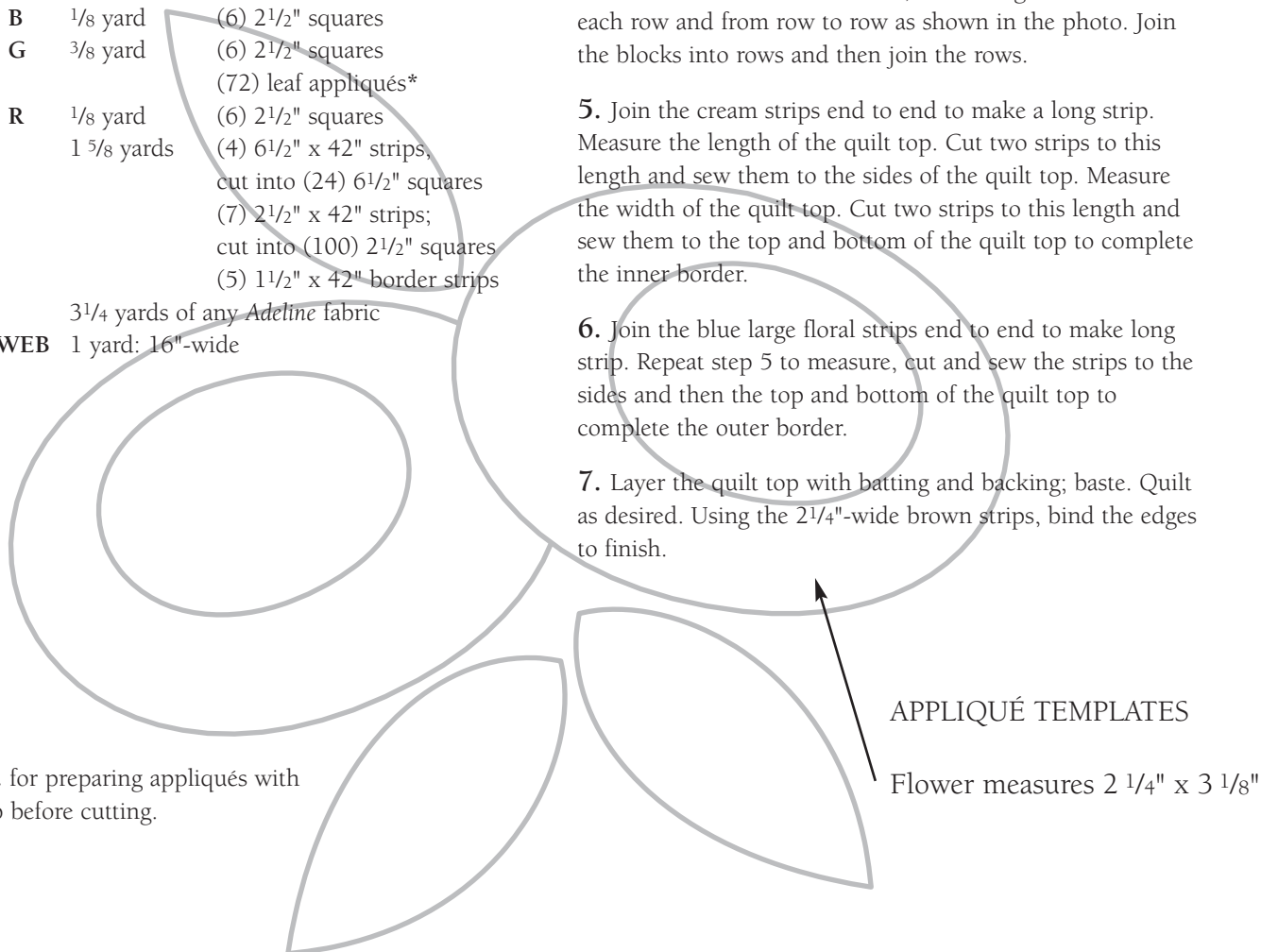
3. Referring to the photo, remove the paper and fuse two flowers, two flower centers, and three leaves in the center of each 6 1/2" cream square. Use a matching color thread and the machine stitch of your choice to finish the raw edges of each shape. Make 24 appliqué blocks.

4. Lay out the Nine Patch blocks and appliqué blocks in seven rows of seven blocks each, alternating the blocks in each row and from row to row as shown in the photo. Join the blocks into rows and then join the rows.

5. Join the cream strips end to end to make a long strip. Measure the length of the quilt top. Cut two strips to this length and sew them to the sides of the quilt top. Measure the width of the quilt top. Cut two strips to this length and sew them to the top and bottom of the quilt top to complete the inner border.

6. Join the blue large floral strips end to end to make long strip. Repeat step 5 to measure, cut and sew the strips to the sides and then the top and bottom of the quilt top to complete the outer border.

7. Layer the quilt top with batting and backing; baste. Quilt as desired. Using the 2 1/4"-wide brown strips, bind the edges to finish.



APPLIQUÉ TEMPLATES

Flower measures 2 1/4" x 3 1/8"

*See step 2 for preparing appliqué with fusible web before cutting.

Hugs & Kisses

by Nancy Mahoney using her *Adeline* fabric collection for P&B Textiles
Size: 52" square

CODE	YARDAGE	CUTTING
ADEL 771 B	1/4 yard	(8) 2 1/2" x 4 1/2" rectangles (6) 2 1/2" squares
ADEL 771 P	1 yard	(6) 4 1/2" x 42" border strips (8) 2 1/2" x 4 1/2" rectangles (6) 2 1/2" squares
ADEL 772 B	1/8 yard	(4) 2 1/2" x 4 1/2" rectangles (6) 2 1/2" squares
ADEL 772 G	1/8 yard	(4) 2 1/2" x 4 1/2" rectangles (6) 2 1/2" squares
ADEL 772 Y	1/8 yard	(4) 2 1/2" x 4 1/2" rectangles (7) 2 1/2" squares
ADEL 773 B	1/8 yard	(4) 2 1/2" x 4 1/2" rectangles (6) 2 1/2" squares
ADEL 773 C	1/8 yard	(4) 2 1/2" x 4 1/2" rectangles (7) 2 1/2" squares
ADEL 773 P	1/8 yard	(4) 2 1/2" x 4 1/2" rectangles (6) 2 1/2" squares
ADEL 774 G	1/8 yard	(4) 2 1/2" x 4 1/2" rectangles (6) 2 1/2" squares
ADEL 774 Z	1/8 yard	(4) 2 1/2" x 4 1/2" rectangles (6) 2 1/2" squares
ADEL 775 B	1/8 yard	(4) 2 1/2" x 4 1/2" rectangles (6) 2 1/2" squares
ADEL 775 R	1/8 yard	(4) 2 1/2" x 4 1/2" rectangles (7) 2 1/2" squares
ADEL 775 Z	1/2 yard	(6) 2 1/4" x 42" binding strips
ADEL 776 B	1/4 yard	(4) 2 1/2" x 4 1/2" rectangles (6) 2 1/2" squares
ADEL 776 P	1/8 yard	(4) 2 1/2" x 4 1/2" rectangles (7) 2 1/2" squares
ADEL 777 C	1/8 yard	(4) 2 1/2" x 4 1/2" rectangles (6) 2 1/2" squares
ADEL 777 P	1/8 yard	(4) 2 1/2" x 4 1/2" rectangles (6) 2 1/2" squares
ADEL 777 Y	1/8 yard	(4) 2 1/2" x 4 1/2" rectangles (6) 2 1/2" squares
ADEL 778 B	1/8 yard	(4) 2 1/2" x 4 1/2" rectangles (6) 2 1/2" squares
ADEL 778 G	1/8 yard	(4) 2 1/2" x 4 1/2" rectangles (6) 2 1/2" squares
ADEL 778 R	1/8 yard	(4) 2 1/2" x 4 1/2" rectangles (6) 2 1/2" squares
CSNE AW	1 3/8 yards	(14) 2 1/2" x 42" strips; cut into (220) 2 1/2" squares (5) 1 1/2" x 42" border strips
BACKING	3 1/4 yards of any <i>Adeline</i> fabric	

ASSEMBLY

1. Lay out five different assorted print squares and four cream squares in a nine-patch arrangement. Join the squares in rows. Join the rows to complete the block. Make a total of 25 Nine Patch blocks.

2. Draw a diagonal line from corner to corner on the wrong side of 96 of the cream squares. Place a cream square on one end of an assorted print rectangle as shown. Sew along the line and trim the corner fabric, leaving a 1/4" seam allowance. Press the seam allowances toward the rectangle. Make 96 units; keeping like units together. The units should measure 2 1/2" x 4 1/2". (See figure 1.)

3. Lay out four matching rectangular units from step 2 and one cream square. Sew a rectangular unit to the top of a cream square; stop stitching about halfway across the square as indicated; press. Sew a matching rectangular unit to the right edge as shown; press. (See figure 2.)

4. Sew a matching rectangular unit to the bottom edge of the unit from step 3; press. Sew a matching rectangular unit to the left side of the unit; press. Complete the partial seam stitched in step 3. Make 24 blocks. (See figure 3.)

5. Lay out the blocks in seven rows of seven blocks each, alternating the blocks in each row and from row to row as shown in the photo. Join the blocks into rows and then join the rows.

6. Join the cream strips end to end to make a long strip. Measure the length of the quilt top. Cut two strips to this length and sew them to the sides of the quilt top. Measure the width of the quilt top. Cut two strips to this length and sew them to the top and bottom of the quilt top to complete the inner border.

7. Join the pink large floral strips end to end to make long strip. Repeat step 6 to measure, cut and sew the strips to the sides and then the top and bottom of the quilt top to complete the outer border.

8. Layer the quilt top with batting and backing; baste. Quilt as desired. Using the 2 1/4"-wide brown strips, bind the edges to finish.



FIGURE 1

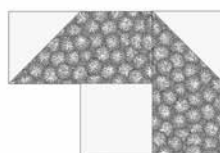


FIGURE 2

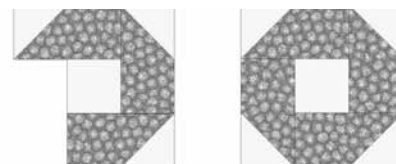


FIGURE 3

Adeline

Fabric Collection by Nancy Mahoney



ADEL 771 B



ADEL 771 P



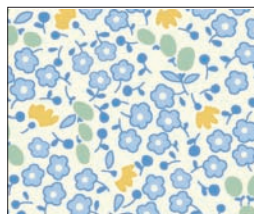
ADEL 772 B



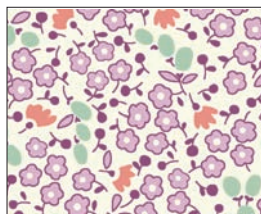
ADEL 772 G



ADEL 772 Y



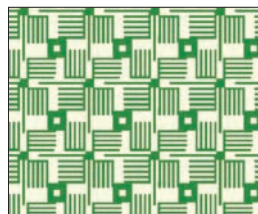
ADEL 773 B



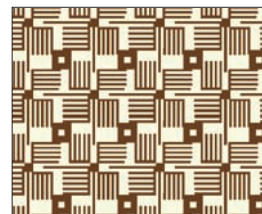
ADEL 773 C



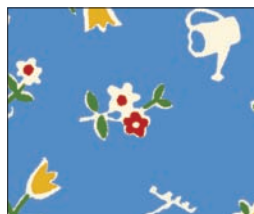
ADEL 773 P



ADEL 774 G



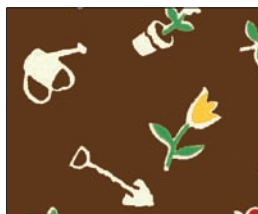
ADEL 774 Z



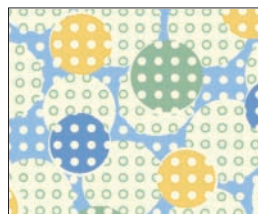
ADEL 775 B



ADEL 775 R



ADEL 775 Z



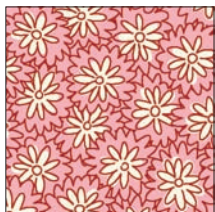
ADEL 776 B



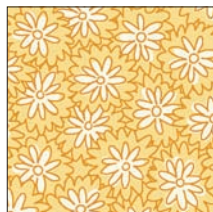
ADEL 776 P



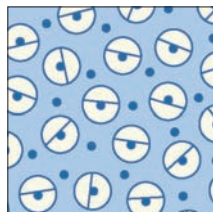
ADEL 777 C



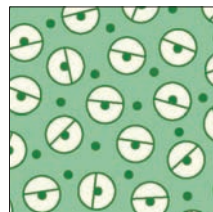
ADEL 777 P



ADEL 777 Y



ADEL 778 B



ADEL 778 G



ADEL 778 R

P&B Textiles ♦ 1580 Gilbreth Road, Burlingame, CA 94010 ♦ 800-852-2327

For wholesale orders: 14683 Midway Road, Addison, TX 75001 ♦ 800-351-9087 ♦ www.pbtex.com



100% cotton ♦ Cold wash & dry ♦ 43"/44" ♦ Colors may vary due to printing process ♦ 10/11

All fabrics shown at 75% scale.