

Adeline

Fabric Collection by **Nancy Mahoney**

FREE PATTERN
Ask for our fabrics
in your local
independent
quilt shop!



Pretty in Pink quilt by Nancy Mahoney

Quilt Size: 34" square



pbtex.com

Adeline

Pretty in Pink quilt by Nancy Mahoney using her *Adeline* fabric collection for P&B Textiles
 Quilt Size: 34" square

Yardage

Cutting

ADEL 771 P
large floral



$\frac{5}{8}$ yd

From the pink large floral (771 P), cut:

- (4) 4" x 42" outer-border strips

ADEL 773 P
small floral



$\frac{3}{8}$ yd

From the pink small floral (773 P), cut:

- (16) 3" squares
- (32) petals, prepared with fusible web

ADEL 777 P
dark pink flowers
(includes binding)



$\frac{5}{8}$ yd

From the dark pink flowers (777 P), cut:

- (16) 3" squares
- (32) petals, prepared with fusible web
- (4) 2 $\frac{1}{4}$ " x 42" binding strips

ADEL 777 Y
yellow flowers

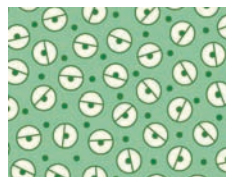


$\frac{1}{8}$ yd

From the yellow flowers, (777 Y), cut:

- (9) 1" circles, prepared with fusible web

ADEL 778 G
green dots



$\frac{1}{2}$ yd

From the green dots (778 G), cut:

- (20) leaves, prepared with fusible web
- (20) 1 $\frac{1}{4}$ " circles, prepared with fusible web
- (8) $\frac{1}{4}$ "-wide stems, prepared with fusible web
- (1) 3 $\frac{1}{4}$ " circle, prepared with fusible web

ADEL 778 R
red dots



$\frac{1}{4}$ yd

From the red dots (778 R), cut:

- (4) 1" x 42" inner-border strips
- (8) 1" circles, prepared with fusible web
- (1) 2 $\frac{1}{8}$ " circle, prepared with fusible web

CSNE AW
cream solid



1 yd

From the cream solid, cut:

- (1) 20 $\frac{1}{2}$ " square
- (16) 3 $\frac{1}{2}$ " x 5 $\frac{1}{2}$ " rectangles
- (4) 3 $\frac{1}{2}$ " squares

BACKING: 1 $\frac{1}{8}$ yards (per quilt) of any *ADEL* fabric

Adeline

Pretty in Pink quilt by Nancy Mahoney using her *Adeline* fabric collection for P&B Textiles

Quilt Size: 34" square

Assembly

Appliqué shapes do not include seam allowances and need to be reversed for fusible appliqué.

1. Following the manufacturer's instructions and using the patterns, trace the listed number of each shape onto the paper side of fusible web. Group the shapes together on the fusible web so that you can fuse them as a single unit to the wrong side of the appropriate fabric. Roughly cut out the single unit, leaving about $\frac{1}{4}$ " margin all around the drawn lines. Fuse the traced shapes to the wrong side of the appropriate fabric and cut out the shapes, cutting directly on the line.

2. Referring to the photo and using the pattern as a placement guide, remove the paper and fuse the shapes to the $20\frac{1}{2}$ " cream square, starting with the stems. (Set the green $1\frac{1}{4}$ " circles aside to use in step 5.)

3. Use a matching color thread and the machine stitch of your choice to finish the raw edges of each shape.

4. Draw a diagonal line from corner to corner on the wrong side of 3" dark pink and pink small floral squares. Place a small floral square on the left end of a cream rectangle. Sew along the line and trim the corner fabric, leaving $\frac{1}{4}$ " seam allowance. Press the seam allowances toward the resulting triangle. Place a dark pink square on the right end of the rectangle. Sew, trim and press to make a border unit. Make 16 units. The units should measure $3\frac{1}{2}$ " x $5\frac{1}{2}$ ".

5. Center a green circle from step 2 in the middle of each border unit and fuse in place. Fuse a green circle in the center of each $3\frac{1}{2}$ " cream square. Use matching thread to finish the raw edge of each circle.

6. Referring to the photo for placement guidance, join four border units end to end to make a strip. Make four strips. Sew two strips to opposite sides of the appliquéd block. Sew an appliquéd cream square from step 5 to the ends of the two remaining strips and sew them to the top and bottom edges to complete the sawtooth border.



7. Measure the length of the quilt and trim two 1"-wide red strips to this length. Sew the strips to the sides of the quilt top. Measure the width of the quilt top and trim the two remaining 1"-wide red strips to this length. Sew the strips to the top and bottom of the quilt top to complete the inner border.

8. Repeat step 7 using the 4"-wide pink floral strips for the outer border.

9. Layer the quilt top with batting and backing; baste. Quilt as desired. Using the $2\frac{1}{4}$ "-wide dark pink strips, bind the edges to finish.



Align with pattern on page 2

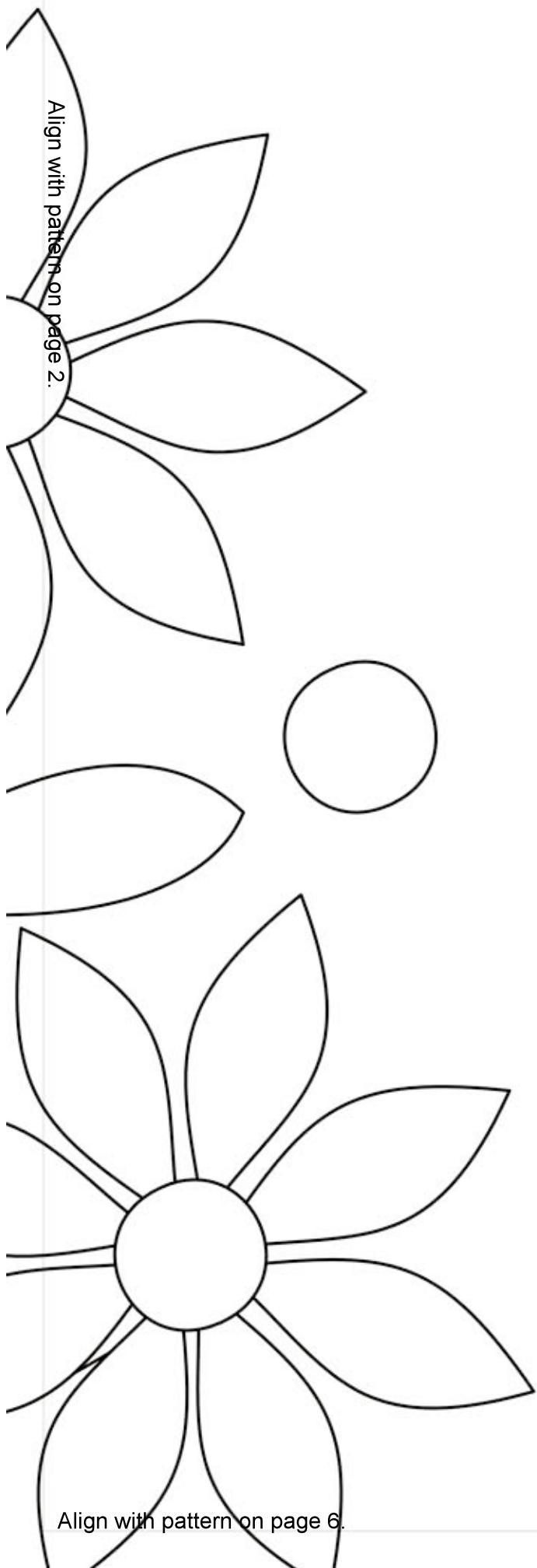
Align with pattern on page 4.



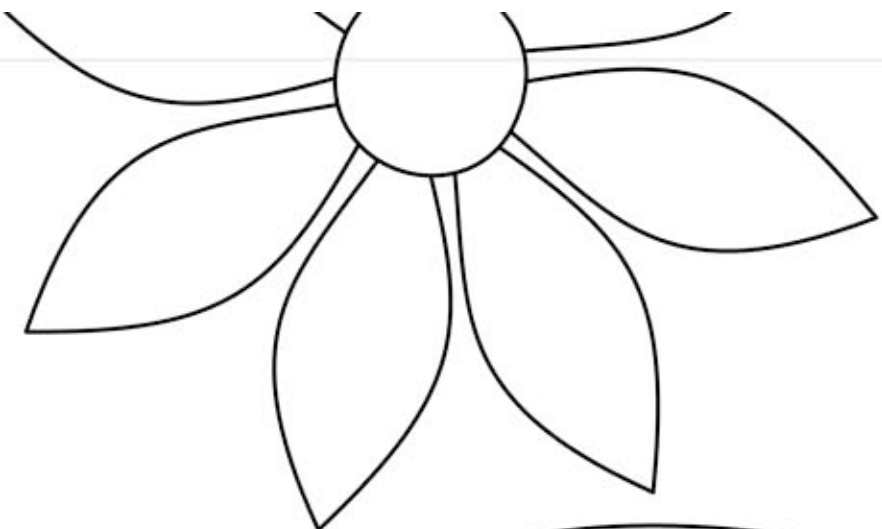
Align with pattern on page 1.

Align with pattern on page 3.

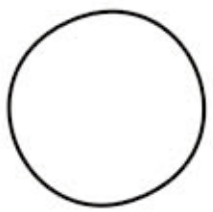
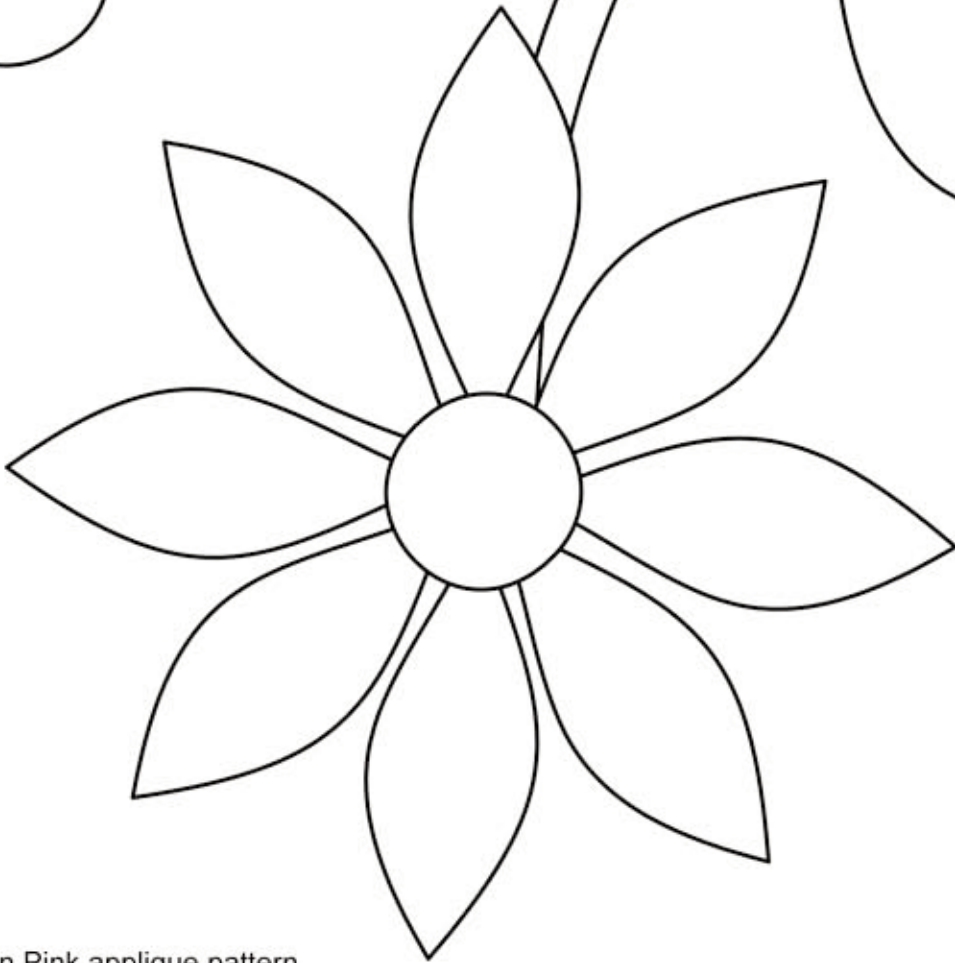
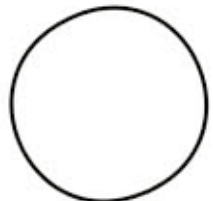
Align with pattern on page 5.



Align with pattern on page 6.



Align with pattern on page 1.



Align with pattern on page 5.

Align with pattern on page 2.

Align with pattern on page 6.

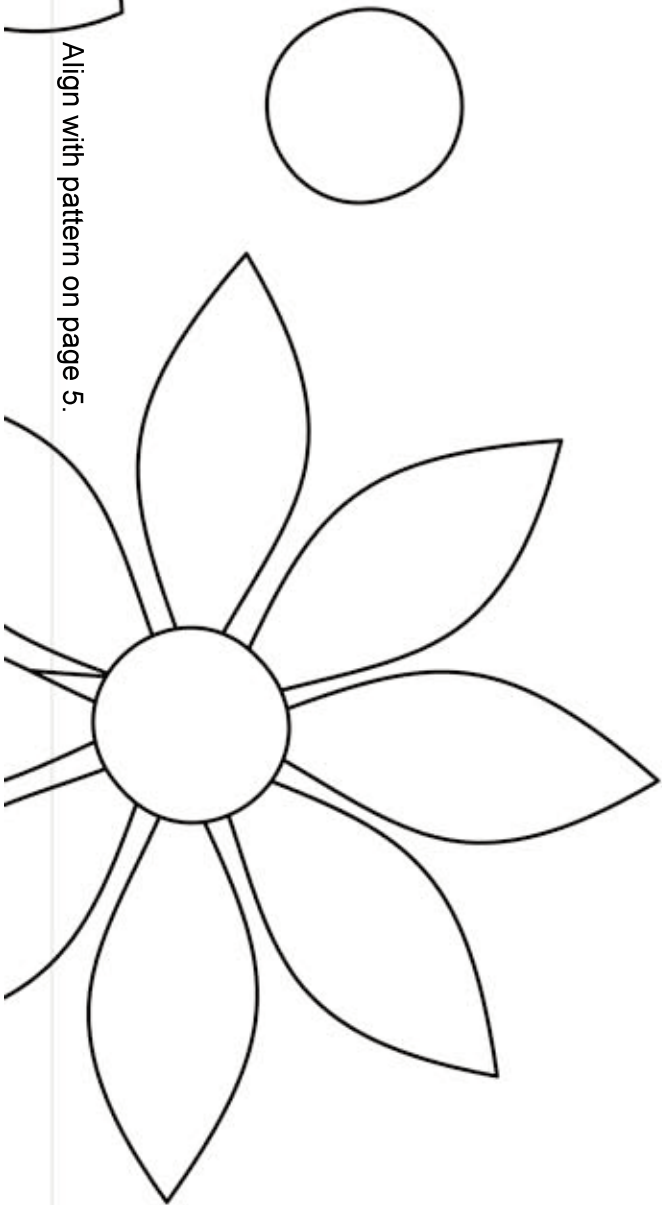
Align with pattern on page 4.



Align with pattern on page 3.

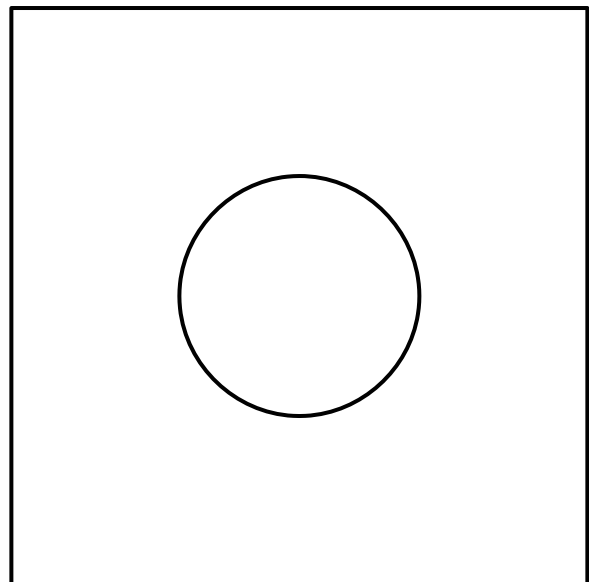


Align with pattern on page 5.



ADEL - Pretty in Pink applique pattern
Page 6

← 3" →



Border Circle